



Using Flash Video Encoder

8

## Trademarks

1 Step RoboPDF, ActiveEdit, ActiveTest, Authorware, Blue Sky Software, Blue Sky, Breeze, Breezo, Captivate, Central, ColdFusion, Contribute, Database Explorer, Director, Dreamweaver, Fireworks, Flash, FlashCast, FlashHelp, Flash Lite, FlashPaper, Flash Video Encoder, Flex, Flex Builder, Fontographer, FreeHand, Generator, HomeSite, JRun, MacRecorder, Macromedia, MXML, RoboEngine, RoboHelp, RoboInfo, RoboPDF, Roundtrip, Roundtrip HTML, Shockwave, SoundEdit, Studio MX, UltraDev, and WebHelp are either registered trademarks or trademarks of Macromedia, Inc. and may be registered in the United States or in other jurisdictions including internationally. Other product names, logos, designs, titles, words, or phrases mentioned within this publication may be trademarks, service marks, or trade names of Macromedia, Inc. or other entities and may be registered in certain jurisdictions including internationally.

## Third-Party Information

This guide contains links to third-party websites that are not under the control of Macromedia, and Macromedia is not responsible for the content on any linked site. If you access a third-party website mentioned in this guide, then you do so at your own risk. Macromedia provides these links only as a convenience, and the inclusion of the link does not imply that Macromedia endorses or accepts any responsibility for the content on those third-party sites.

Speech compression and decompression technology licensed from Nellymoser, Inc. ([www.nellymoser.com](http://www.nellymoser.com)).



Sorenson™ Spark™ video compression and decompression technology licensed from Sorenson Media, Inc.

Opera ® browser Copyright © 1995-2002 Opera Software ASA and its suppliers. All rights reserved.

Macromedia Flash 8 video is powered by On2 TrueMotion video technology. © 1992-2005 On2 Technologies, Inc. All Rights Reserved. <http://www.on2.com>.

Visual SourceSafe is a registered trademark or trademark of Microsoft Corporation in the United States and/or other countries.

**Copyright © 2005 Macromedia, Inc. All rights reserved. This manual may not be copied, photocopied, reproduced, translated, or converted to any electronic or machine-readable form in whole or in part without written approval from Macromedia, Inc. Notwithstanding the foregoing, the owner or authorized user of a valid copy of the software with which this manual was provided may print out one copy of this manual from an electronic version of this manual for the sole purpose of such owner or authorized user learning to use such software, provided that no part of this manual may be printed out, reproduced, distributed, resold, or transmitted for any other purposes, including, without limitation, commercial purposes, such as selling copies of this documentation or providing paid-for support services.**

## Acknowledgments

Project Management: Sheila McGinn

Writing: Chris Bedford

Managing Editor: Rosana Francescato

Lead Editor: Lisa Stanziano

Editing: Lisa Stanziano, Anne Szabla

Production Management: Patrice O'Neill, Kristin Conradi, Yuko Yagi

Media Design and Production: Adam Barnett, Aaron Begley, Paul Benkman, John Francis, Geeta Karmarkar, Masayo Noda, Paul Rangel, Arena Reed, Mario Reynoso

Special thanks to Jody Bleyle, Mary Burger, Lisa Friendly, Stephanie Gowin, Bonnie Loo, Mary Ann Walsh, Erick Vera, the beta testers, and the entire Flash and Flash Player engineering and QA teams.

First Edition: September 2005

Macromedia, Inc.  
601 Townsend St.  
San Francisco, CA 94103

# Contents

<b>Using Flash Video Encoder</b> .....	<b>5</b>
About Flash Video and Flash Video Encoder .....	6
About Flash Video Exporter (QuickTime Export plug-in) .....	6
Supported video compression codecs for Flash Video .....	7
Comparing the On2 VP6 and Sorenson Spark video codecs .....	8
Understanding video standards and terminology .....	8
Frame rates .....	9
Data rates .....	10
Keyframes .....	10
Aspect ratios (frame size) .....	11
About encoding audio-only files .....	13
About cue points .....	13
Encoding video with Flash Video Encoder .....	14
Saving the encoding queue .....	16
Removing files from the encoding queue .....	16
Skipping a file .....	16
Stopping the encoding of the current file .....	17
Selecting advanced video encoding settings .....	17
Specifying advanced video encoding settings .....	18
Specifying advanced audio encoding settings .....	21
Defining and embedding cue points .....	21
Cropping and trimming video .....	24
Setting Flash Video Encoder preferences .....	26
Viewing the Flash Video Encoder log file .....	27
Troubleshooting video encoding errors .....	28
<b>Index</b> .....	<b>29</b>



# Using Flash Video Encoder

Macromedia Flash 8 Video Encoder is a stand-alone video encoding application that lets you encode video in Macromedia Flash Video (FLV) format. The FLV format lets you easily incorporate video into a web page or Flash document in a format that almost anyone can view using the Flash Player. The ubiquity of Flash Player ensures that most visitors to your website can view Flash Video without downloading additional plug-ins, so you can reach the largest possible Internet viewing audience with low development, testing, and support costs.

Flash Video Encoder comes with Macromedia Flash Professional 8 or Macromedia Studio 8.

This chapter contains the following topics:

About Flash Video and Flash Video Encoder .....	6
Supported video compression codecs for Flash Video .....	7
Understanding video standards and terminology .....	8
About encoding audio-only files .....	13
About cue points .....	13
Encoding video with Flash Video Encoder .....	14
Selecting advanced video encoding settings .....	17
Setting Flash Video Encoder preferences .....	26
Viewing the Flash Video Encoder log file .....	27
Troubleshooting video encoding errors .....	28

# About Flash Video and Flash Video Encoder

Flash Video offers technological and creative benefits that let you create rich, immersive experiences that combine video presentations with data, graphics, sound, and interactive control.

Flash Video provides full creative control and integrates easily into your website. You can use *video skins* (graphic themes) to customize video presentations, incorporate your organization's branding, and design unique controls that let visitors to your website interact with video content.

Flash treats Flash Video simply as a media type, so you can layer, script, and control video like any other object in a Flash SWF file. Flash Video is an integral part of the viewing experience, not a separate pop-up window that plays video externally and interrupts the experience.

Flash Video Encoder lets you encode video files in either the On2 VP6 or Sorenson Spark video codecs. A *codec* is an algorithm that controls how video files are compressed during import and decompressed during playback. You can use Flash Video Encoder on a computer that does not have Flash or other Macromedia Studio products installed. This configuration lets you continue working with Flash, Dreamweaver, or another application because video encoding is a processor-intensive activity that often prevents you from simultaneously working in other applications.

Using Flash Video Encoder on a dedicated computer for video encoding lets you batch-process multiple video clips; in environments where video is a significant form of content, batch processing produces an expedited workflow. You can add, reorder, and change the encoding settings of files in the batch processing queue while Flash Video Encoder is encoding video files.

## About Flash Video Exporter (QuickTime Export plug-in)

If you have Macromedia Flash Professional 8 and QuickTime 6.1.1 or later installed on your computer, you can use the Macromedia Flash Video Exporter (QuickTime Export plug-in) to export FLV files from supported video-editing applications. You can then import these FLV files directly into Flash to use in your Flash documents. The QuickTime Export plug-in is installed by the Flash 8 Video Encoder installer.

The following video-editing applications are supported by the QuickTime Export plug-in:

- Adobe After Effects (Windows and Macintosh)
- Apple FinalCut Pro (Macintosh)
- Apple QuickTime Pro (Windows and Macintosh)
- Avid Xpress DV (Windows and Macintosh)

NOTE

Avid Xpress DV does not support the encoding of an alpha channel when you use it to export to the FLV video format.

Exporting FLV files from either Flash 8 Video Encoder or video-editing applications using the QuickTime Export plug-in significantly streamlines the workflow in using FLV files in your Flash documents. With the QuickTime Export plug-in, you can select encoding options for video and audio content as you export, including frame rate, bit rate, quality, and other options. You can import FLV files directly into Flash without needing to re-encode the video after you import them.

## Supported video compression codecs for Flash Video

By default, Flash Video Encoder encodes video using the On2 VP6 codec for use with Flash Player 8 and the Sorenson Spark codec for use with Flash Player 7. To understand how Flash achieves high-quality video with low bandwidth requirements, you should understand video compression.

There are two types of compression that can be applied to digital media: *spatial* and *temporal*. Spatial compression is applied to a single frame of data, independent of any surrounding frames. Spatial compression can be *lossless* (in which no data is discarded from the image) or *lossy* (in which data is selectively discarded). A spatially compressed frame is often called an *intraframe*.

Temporal compression identifies the differences between frames and stores only those differences, so that frames are described based on their difference from the preceding frame. Unchanged areas are simply repeated from the previous frame(s). A temporally compressed frame is often called an *interframe*.

Both the On2 VP6 and Sorenson Spark are interframe codecs. Although many other codecs use intraframe compression (for example, JPEG is an intraframe codec), the efficient interframe compression of the On2 VP6 and Sorenson Spark codecs, among other features, distinguishes them from other compression technologies because these codecs require a much lower data rate (also known as the *bit rate*) to produce high-quality video.

It's important to note that interframe codecs also use intraframes. Intraframes are used as the reference frames (keyframes) for the interframes. Both the On2 VP6 and Sorenson Spark codecs always begin with a keyframe. Each keyframe becomes the main reference frame for the following interframes. Whenever the next frame is significantly different from the previous frame, the codec compresses a new keyframe.

## Comparing the On2 VP6 and Sorenson Spark video codecs

The On2 VP6 codec is the default video codec to use when encoding FLV content for use with Flash Player 8. Using the On2 VP6 codec provides the following advantages when compared to the Sorenson Spark codec:

- Encodes higher quality video at the same data rate
- Supports the use of an alpha channel to create composite video

In order to support better quality video at the same data rate, the On2 VP6 codec is noticeably slower to encode, and requires more processor power on the client computer to decode and play back the video data. For this reason, you should consider the lowest common denominator of computer that your audience will use when they access your Flash video content.

If you anticipate a large user base that is using older computers, it may be advisable to consider encoding your FLV files using the Sorenson Spark codec.

## Understanding video standards and terminology

The following section introduces digital video concepts and terminology you should know when working with video content. If you are new to digital video or want to learn more about digital video and encoding high-quality video content, this section can help you understand the trade-offs related to encoding video for different applications and Internet viewing environments.



## Frame rates

Video is a sequence of images that appear on the screen in rapid succession, giving the illusion of motion. The number of frames that appear every second is known as the *frame rate*, and it is measured in frames per second (fps). The higher the frame rate, the more frames per second are used to display the sequence of images, resulting in smoother motion. The trade-off for higher quality, however, is that higher frame rates require a larger amount of data to display the video, which uses more bandwidth.

When working with digitally compressed video in a format such as Flash Video, the higher the frame rate, the larger the file size. To reduce the file size, you must lower either the frame rate or the data rate (for more information, see “[Data rates](#)” on page 10). If you lower the data rate and leave the frame rate unchanged, the image quality is reduced. If you lower the frame rate and leave the data rate unchanged, the video motion may look less smooth than desired.

Because video looks much better at native frame rates (the frame rate at which the video was originally filmed), Macromedia recommends leaving the frame rate high if your delivery channels and playback platforms allow it. For full-motion NTSC, (the standard defined by the National Television System Committee in the U.S.), use 29.97 fps; for PAL (Phase Alternating Line, the dominant television standard in Europe), use 25 fps. If you lower the frame rate (which can significantly reduce the video data that must be encoded), Flash Video Encoder drops frames at a linear rate to achieve the new fps rate. However, if you need to reduce the frame rate, the best results come from dividing evenly. For example, if your source has a frame rate of 24 fps, then reduce the frame rate to 12 fps, 8 fps, 6 fps, 4 fps, 3 fps, or 2 fps. If the source frame rate is 30 fps, in most cases you can adjust the frame rate to 15 fps, 10 fps, 6 fps, and so on.

**NOTE**

If a video clip is longer than 10 minutes, the audio will drift noticeably out of sync if you do not adhere to the 29.97 fps rate or an accurate even division for lower frame rates (such as 14.98 fps, which is half of 29.97).

If your video clip is encoded with a higher data rate, a lower frame rate can improve playback on lower-end computers. For example, if you are compressing a talking-head clip with little motion, cutting the frame rate in half might save only 20 percent of the data rate. However, if you are compressing high-motion video, reducing the frame rate has a much greater effect on the data rate.

## Data rates

The data rate affects the quality of a video clip and the audience that can download the file given their bandwidth constraints.

When you deliver video using the Internet, you should produce files using lower data rates. Users with fast Internet connections can view the files with little or no delay, but dial-up users must wait for files to download. If you anticipate an audience of dial-up users, you should make short video clips to keep the download times within acceptable limits.

Flash Video Encoder lets you specify data rate settings for encoding video at a low, medium, or high quality. If the available settings in the Quality pop-up menu do not produce the desired results with your particular source footage, select Custom, and enter a higher data rate in the Maximum Data Rate text box.

## Keyframes

Keyframes are complete video frames (or images) that are inserted at consistent intervals in a video clip. The frames between the keyframes contain information on movement and scene changes that occurs between keyframes. For example, if a video depicts a person walking past a doorway, the keyframes contain the complete image of the person and the door in the background, and the interval frames contain information describing the person's movement as they walk in front of the door.

By default, Flash Video Encoder automatically determines the keyframe interval to use based on the video clip's frame rate. The keyframe interval value tells the encoder how often to re-evaluate the video image and record a full frame, or keyframe, into an FLV file. In Flash Video Encoder, this setting is the keyframe interval value, which represents the number of frames between keyframes. Flash Video Encoder approximates frames that reside between keyframes by estimating the full value of all pixels on the screen by comparing multiple frames and eliminating redundant information.

The keyframe interval value can be any number up to 100. When you select Automatic as an interval setting, Flash Video Encoder places a keyframe every two seconds of playback time. For example, if the video you're encoding has a frame rate of 30 fps, a keyframe will be inserted every 60 frames. In general, the default keyframe interval value provides a reasonable level of control when seeking within a video clip. If you need to select a custom keyframe placement value, be aware that the smaller the keyframe interval, the larger the file size.

If your footage has a lot of scene changes or rapidly moving motion or animation, then the overall image quality may benefit from a lower keyframe interval. In general, a higher keyframe interval produces better image quality because data is not wasted describing the areas of an image that remain unchanged from frame to frame.

An important dependency of the keyframe interval is that it affects the ability of Flash Player to seek (fast-forward or rewind) through an FLV file. Flash Player can only advance from keyframe to keyframe, so if you want to skip to different places and pause the frames, you must use a lower keyframe interval value. If you want to advance to every frame in an FLV file, use a keyframe interval value of 1. When you reduce the keyframe interval value, you must raise the data rate for the Flash video to maintain comparable image quality.

## Aspect ratios (frame size)

As with the frame rate, the aspect ratio (or frame size) for your document is important for producing high-quality video. At a specific data rate (connection speed), increasing the frame size results in decreased video quality. When you select the frame size for your document, consider the frame rate, the aspect ratio of the source video clip, and your personal preferences to create a successful video presentation. Standard video display resolutions on the Internet include 640 x 480, 512 x 384, 320 x 240, and 160 x 120 pixels.

The most common aspect ratio is 4:3 (standard television). Increasingly, 16:9 and 2:1 (wide screen) aspect ratios are becoming more commonplace as well. Typically, you should encode the video using the same aspect ratio at which it was originally captured. Altering a video clip's aspect ratio may result in a distorted video image. An exception to this practice is when encoding digital video (DV) formats, whose aspect ratio is slightly different than the 4:3 aspect ratio because DV uses rectangular pixels. When encoding video content captured with a digital video camera, you must manually specify the frame size of the DV format you are using to preserve the video's aspect ratio. For more information see, [“About encoding video with non-square pixels” on page 12.](#)

The following list of standard frame sizes can be used as a guideline. You can experiment to find the best setting for your project.

Frame sizes for 4:3 aspect ratio video:

- Modem (56k): 160 x 120
- DSL: 320 x 240
- Cable: 512 x 384
- Cable/corporate LAN: 640 x 480

Frame sizes for 19:16 aspect ratio video:

- Modem (56k): 192 x 108
- DSL: 384 x 216
- Cable: 448 x 252
- Cable/corporate LAN: 704 x 396

## About encoding video with non-square pixels

Most static computer graphics use square pixels, which have a width-to-height ratio of 1:1. When working with digital video, pixels often have a different width-to height ratio and are referred to as rectangular pixels. The reason for this behavior is to allow analog video (e.g. broadcast television) and digital video (e.g. DVD video) to coexist. When encoding video formats with non-square pixels (also known as *anamorphic video*), you need to resample the video image to the correct Display Aspect Ratio (DAR).

For example, standard NTSC digital video (DV), has a frame size of 720 x 480 pixels, and it's usually displayed at an aspect ratio of 4:3. This means that each pixel is rectangular, with a pixel aspect ratio (PAR) of 10:11 (a tall, narrow pixel). Both MPEG 1 and 2 video are also produced in various sizes (720 x 480 or 480 x 480 are common) even though they are typically displayed with either a 4:3 or 16:9 (wide screen) aspect ratio.

To calculate the image frame size to use when encoding video using non-square pixels, you must first decide which dimension—width or height—is the preferred master dimension, and then compute the other dimension as follows:

If height is the master dimension, calculate the width using the following formula:

$$\text{width} = \text{height} \times \frac{\text{aspect ratio width}}{\text{aspect ratio height}}$$

For example, if your video uses an aspect ratio of 4:3 the equation would appear as:

$$\text{width} = \text{height} \times \frac{3}{4}$$

If width is the master dimension, calculate the height using the following formula:

$$\text{height} = \text{width} \times \frac{\text{aspect ratio height}}{\text{aspect ratio width}}$$

For example, if your video uses an aspect ratio of 4:3 the equation would appear as:

$$\text{height} = \text{width} \times \frac{4}{3}$$

As an example, if you are encoding a video whose frame size is 720 x 480 pixels, and you want to encode it with a 4:3 aspect ratio, you must determine the width at which to encode the video frame in pixels:

$$640 = 480 \times \frac{4}{3}$$

The result is a video image height of 640 pixels.

Thus, you need to encode the 720 x 480 image to 640 x 480, a standard 4:3 aspect ratio.

To correct the image size when encoding using Flash Video Encoder, deselect the Maintain Aspect Ratio check box in the Advanced Encoding Settings dialog box, and enter the corrected dimensions at which to encode the video. For more information, see [“Selecting advanced video encoding settings” on page 17](#).

## About encoding audio-only files

The same considerations exist for audio production as for video production. To achieve good audio compression, you must begin an audio file that is free of distortion and audible artifacts introduced from the source recording. If you are encoding material from a CD, try to record the file using direct digital transfer rather than your sound card’s analog input. The sound card introduces an unnecessary digital-to-analog and analog-to-digital conversion that can create noise in your transferred audio. Direct digital transfer tools are available for both Windows and Macintosh platforms. If you must record from an analog source, use the highest quality sound card available.

## About cue points

Cue points cause the video playback to start other actions within the presentation and let you synchronize the video with animation, text, graphics, and other interactive content. For example, you can create a Flash presentation that has video playing in one area of the screen while text and graphics appear in another area.

Each cue point consists of a name, the time at which it occurs in the video, type of cue point, and optional parameters. You specify cue point times using the format: hour:minute:second:millisecond. When the encoded FLV file is played back within a Flash SWF file, and the FLV plays or seeks to the elapsed time specified by the cue point, the action you’ve specified is triggered.

Flash Video Encoder lets you embed cue points in video clips using the Advanced Settings dialog box. You can assign each cue point an event type and parameter that can be used with ActionScript or the Flash FLVPlayback component to programmatically cause the video playback to start other actions in the presentation.

For more information, see [“Defining and embedding cue points” on page 21](#).

# Encoding video with Flash Video Encoder

By default, Flash Video Encoder encodes source videos using the On2 VP6 codec, which is compatible with Flash Player 8. The Flash Video Encoder uses the Sorenson Spark codec to encode video for Flash Player 7.

When configuring encoding settings, you can select individual files and specify different settings based on the type of video format and quality required for each file, or you can select multiple files and specify the same settings for all of them.

## To encode video with the Flash Video Encoder:

1. Start Flash Video Encoder by selecting Start > All Programs > Macromedia > Macromedia Flash 8 Video Encoder (Windows) or open the folder that contains the Macromedia Flash 8 Video Encoder application, and double click the application icon (Macintosh).
2. In the Flash 8 Video Encoder, add source video clips to the list of files to encode. You can drag a file into the list, or click the Add button and select a file on your computer.

TIP

You can select multiple video files and drag them into the list of files to encode.

3. Click Settings (Edit > Encoding Settings) to display the Flash Video Encoding Settings dialog box.

Flash provides several pre-configured encoding profiles that you can use to encode your video. In the Encoding panel, you can select an encoding profile to determine the level of compression to be applied to the video clip.

The encoding profiles are based on the Flash Player version for which you intend to publish content, and the data rate at which you want your video content to be encoded. If you choose an encoding profile using Flash Player 8, the On2 VP6 video codec is used to encode the video. If you choose an encoding profile using Flash Player 7, the Sorenson Spark video codec is used to encode the video.

For information on advanced video encoding settings, see [“Specifying advanced video encoding settings” on page 18](#).

4. Verify that the encoding profile you’ve selected is appropriate for your intended application. The text box below the Flash Video Encoding Profile pop-up menu displays the Flash Player version, video codec, video bit rate, and audio encoding information for the selected encoding profile.

5. Enter a filename for the encoded FLV file. If you don't specify a filename, Flash Video Encoder uses the filename of the source video clip. When naming a file, do not enter the .flv extension; Flash Video Encoder does this automatically.

You can specify a destination folder in which to save the encoded FLV file relative to the folder containing the source video clip. When specifying a destination folder:

- The destination folder you specify must already exist. If you specify a folder that doesn't exist, an error message informs you that the file cannot be encoded because the folder cannot be found.
- When specifying a folder, you must separate the folder name and the filename using either a forward slash (/) or backward slash (\) (Windows), or a forward slash (/) (Macintosh).

**TIP**

You can specify a folder in which to save encoded files using the Flash Video Encoder Preferences. For more information, see [“Setting Flash Video Encoder preferences” on page 26](#).

6. Do one of the following:
  - Click Show Advanced Settings to further adjust the encoding settings, embed cue points, or to modify the video clip's size or playback length using the crop and trim controls.
  - Click OK to close the Flash Video Encoding Settings dialog box.

7. Click Start Queue to begin encoding your files.

Flash 8 Video Encoder starts encoding the first file in the video encoding list. While a file is being encoded, the Status column of the video encoding list provides information on the status of each video:

**Encoding** indicates that the file is currently being encoded. Flash 8 Video Encoder encodes only one file at a time.

**Waiting** indicates that the file is in the encoding queue but has not been encoded. You can remove a file from the queue that has not been encoded or that is not being encoded. For more information, see [“Removing files from the encoding queue” on page 16](#).

**Skip** indicates that the file will be skipped during the encoding process. You can choose to skip files or change their status to Waiting. For more information, see [“Skipping a file” on page 16](#).



**Encoding complete icon** indicates that the specified file has been successfully encoded.



**Error icon** indicates that Flash 8 Video Encoder encountered an error when attempting to encode the specified file, or that the user canceled the encoding process while the file was being encoded. Errors are recorded to a log file.

If you exit and restart Flash Video Encoder, or if you stop and restart the queue, a dialog box appears that lets you select the file to encode.

8. The FLV encoded files are saved to the same folder as the source video files with a .flv file extension to identify them. If you encode the same file more than once, an incremental number is appended to the filename for each additional encoding.

## Saving the encoding queue

You can manually save the current encoding queue—including all encoding settings. If you do not choose to save the encoding queue, it is saved automatically when you exit Flash Video Encoder.

### To save the encoding queue:

- Select File > Save Queue.

## Removing files from the encoding queue

You can remove any video from the encoding queue before it is encoded.

### To remove a video from the encoding queue:

1. Select the video (or videos) that you want to remove from the source file list.
2. Click Remove.

A dialog box prompts you to confirm that you want the selected files removed from the encoding queue.

## Skipping a file

You can specify that Flash Video Encoder not encode a file in the current encoding queue.

### To skip a file:

1. Select the file or files that you want to skip in the encoding queue. To select multiple files in the encoding queue, Control-click (Windows) or Command-click (Macintosh).
2. Select Edit > Skip Selection.



### To reset a skipped file for encoding:

1. Select the file or files in the encoding queue that you want to reset to the Waiting to Encode state. To select multiple files in the encoding queue, Control-click (Windows) or Command-click (Macintosh).
2. Select Edit > Reset Status.

The selected file or files will be reset to the Waiting to Encode state. You can reset the status of files while Flash Video Encoder is encoding.

## Stopping the encoding of the current file

You can stop the encoding process for any file that is currently being encoded. If you want to specify that Flash Video Encoder not encode a file that is waiting to be encoded, you can either remove that file from the encoding queue, or specify that the file be skipped. For more information, see [“Removing files from the encoding queue” on page 16](#).

### To stop encoding a file:

- Select File > Stop Current File.

A dialog box prompts you to confirm that you want to stop the current file from encoding. Click OK to stop the encoding process. An error message that states “The operation was interrupted by the user” is written to the log file. For more information, see [“Viewing the Flash Video Encoder log file” on page 27](#).

## Selecting advanced video encoding settings

The Advanced Setting options of Flash Video Encoder let you create custom video encoding settings.

Before creating custom video encoding settings, be sure you understand the different video encoding options. For information about video encoding options, see [“Understanding video standards and terminology” on page 8](#).

### To specify advanced video encoding settings:

1. Select the file or files whose encoding settings you want to modify.  
To select multiple files in the encoding list, Control-click (Windows) or Command-click (Macintosh), or select File > Select All to select all files in the encoding queue.
2. Click Settings (Edit > Encoding Settings).

The Flash Video Encoding Settings dialog box appears.

### 3. Click Advanced Settings.

The Advanced Flash Video Encoding Options are displayed. This dialog box lets you perform the following actions:

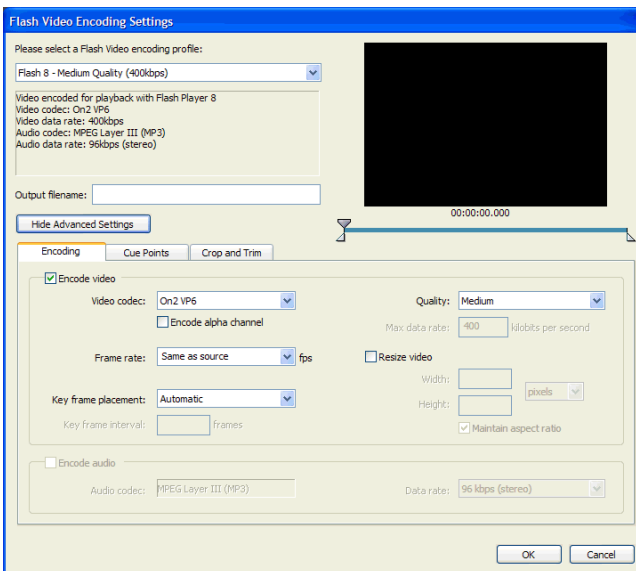
- Specify alternate encoding settings to deliver video for different bandwidths and applications.
- Create cue points to trigger events.
- Crop and trim the video clip to alter its dimensions as well as beginning and ending frames.

To learn about the options available in the Advanced Settings dialog box, see the following sections:

- “Specifying advanced video encoding settings” on page 18
- “Specifying advanced audio encoding settings” on page 21
- “Defining and embedding cue points” on page 21
- “Cropping and trimming video” on page 24

## Specifying advanced video encoding settings

The advanced video and audio settings let you select the quality of your FLV files. The Encoding tab is divided into two categories: Encode Video lets you specify the encoding options for video files; Encode Audio lets you select the bit rate for MP3 audio encoding. The following sections describe the encoding options.



### To specify custom video encoding settings:

1. Select the file or files whose encoding settings you want to modify.  
To select multiple files in the encoding list, Control-click (Windows) or Command-click (Macintosh), or select File > Select All to select all files in the encoding queue.
2. Click Settings (Edit > Encoding Settings).  
The Flash Video Encoding Settings dialog box appears.
3. Click Advanced Settings.
4. The Advanced Flash Video Encoding Options are displayed.  
The Encode Video checkbox is selected by default.
5. Select a video codec with which to encode your content from the Video Codec pop-up menu.  
If you are authoring for Flash Player 7, select Sorenson Spark codec; if you are authoring for Flash Player 8, select On2 VP6 codec.
6. Select a frame rate. Flash Video Encoder uses the same frame rate as the source video by default. If you need to alter the frame rate, be sure you understand how modifying the frame rate affects the video quality. For more information, see [“Understanding video standards and terminology” on page 8](#).

**CAUTION**

If you are modifying the encoding settings for a video clip that will be embedded within a SWF file, the video frame rate must match that of the SWF file. For more information, see “Embedding video in a SWF file” in the “Working with Video” chapter of Using Flash.

7. Select the key frame placement for the video. Keyframes are video frames that contain complete data. For example, if you specify a keyframe interval of 30, Flash Video Encoder encodes a complete frame every 30 frames in the video clip. For frames between keyframe intervals, Flash stores only the data that changes from the preceding frame.  
By default, Flash Video encoder places a keyframe every 2 seconds of playback time. For example, if the video you’re encoding has a frame rate of 30 fps, a keyframe will be inserted every 60 frames. In general, the default keyframe value provides a reasonable level of control when seeking within a video clip. If you need to select a custom keyframe placement value, be aware that the smaller the keyframe interval, the larger the file size.

8. Specify the quality setting for the video from the Quality pop-up menu. The quality setting determines the data rate of the encoded video. The higher the data rate, the better the quality of the encoded video clip.
  - Select a preset Quality setting (Low, Medium, or High) to automatically select a Data Rate value. When you select Low, Medium, and High from this menu, the Maximum Data Rate text box value is updated to reflect the specified value.
  - Select Custom and enter a value, in Kilobits/Sec, in the Maximum Data Rate text box.

**NOTE**

If you find that the preset quality settings do not work with your source footage, try specifying a custom maximum data rate. For more information on data rate, and how it affects video quality, see [“Data rates” on page 10](#).

9. Resize the video clip:
  - a. Select the Resize video check box.
  - b. (Optional) Select the Maintain Aspect Ratio checkbox to keep the aspect ratio the same as the original video clip.

**NOTE**

If you resize a video clip’s frame size, and do not select the Maintain Aspect Ratio checkbox, the video may become distorted.

- c. Specify values for Width and Height. You can specify a frame size in pixels or as a percentage of the original image size.
10. When you finish specifying advanced encoding settings, you may select either the Cue Point or the Crop and Trim tab to further modify the video’s encoding settings, or click OK to return to the main Flash 8 Video Encoding dialog box.

If you are ready to encode your video clips, or need to add additional source video clips to encode, see [“Encoding video with Flash Video Encoder” on page 14](#).

**NOTE**

When you encode the video, the original source video clip is not changed. You can always re-encode a video clip and specify new settings if your initial attempt doesn’t produce the results you want

To learn about the other options available in the Flash Video Encoding Settings dialog box, see the following sections:

- [“Specifying advanced audio encoding settings” on page 21](#)
- [“Defining and embedding cue points” on page 21](#)
- [“Cropping and trimming video” on page 24](#)

## Specifying advanced audio encoding settings

The Encode Audio area of the Flash Video Encoding Settings dialog box is automatically enabled when an audio-only file is added to the encoding list (this portion of the dialog box is disabled when encoding video content with a combined audio track).

**NOTE**

You can select an encoding profile from the Flash Video Encoding Profile pop-up menu, which sets a corresponding profile for the audio-only encoding format

### To specify custom audio encoding settings:

1. Select the file or files whose encoding settings you want to modify.  
To select multiple files in the encoding list, Control-click (Windows) or Command-click (Macintosh), or select File > Select All to select all files in the encoding queue.
2. Click Settings (Edit > Encoding Settings).  
The Flash Video Encoding Settings dialog box appears.
3. Click Advanced Settings.
4. The Advanced Flash Video Encoding Options are displayed.
5. The Encode Audio checkbox is selected by default.  
By default, the audio codec is MP3.
6. Select a data rate from the Data Rate pop-up menu.  
Better quality audio tracks, such as music and significant background noise, require a higher data rate. Simple dialogue, such as a video of a talking-head with relatively little motion, can be compressed to a much higher degree. Higher bit rate settings (encoded at 80 kbps or larger) are encoded in stereo, while lower bit rate settings (encoded at 64 kbps or smaller) are encoded in mono.

## Defining and embedding cue points

Cue points cause the video playback to start other actions within the presentation. For example, you can create a Flash presentation that has video playing in one area of the screen while text and graphics appear in another area. A cue point placed in the video starts an update to the text and graphic, while they remain relevant to the content of the video.

Each cue point consists of a name and the time at which it occurs. You specify cue point times using the format: hour:minute:second:millisecond.

NOTE

In addition to embedding cue points within the encoded FLV video clip, you can create cue points using the FLVPlayback component. Using this component, you can create a cue point that is not embedded in the video clip itself, and allow you greater flexibility in triggering events. For more information, see Chapter 22, “FLVPlayback Component (Flash Professional Only),” of the *Components Language Reference*.

### To create a cue point:

1. From the encoding queue, select a video in which you want to embed cue points.  
To select a video in the encoding list, click the video name in the video encoding queue.

2. Click Settings.

The Flash Video Encoding Settings dialog box is displayed.

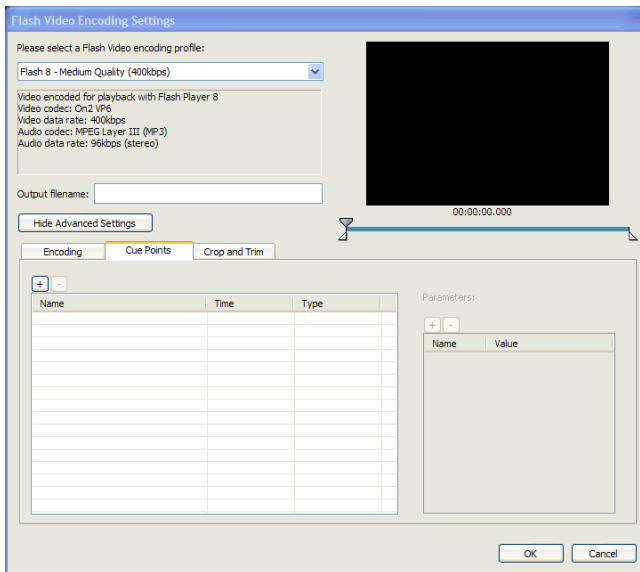
3. Click Advanced Settings.

The Advanced Flash Video Encoding options are displayed.

4. If you haven't specified encoding setting for the video clip, do so now. To learn more, see [“Encoding video with Flash Video Encoder” on page 14](#).

5. Click the Cue Points tab.

The Cue Points panel is displayed.



6. Use the playback head to locate a specific point in the video where you want to embed a cue point. For greater precision, you can use the left and right arrow keys to move the playback head in millisecond increments. To do this, select the playback head, and then use the arrow keys to further adjust its position.

To locate a specific time, use the cursor to move the playback head to the point in the video where you want to embed a cue point. The video preview window lets you visually identify points in the video at which to insert a cue point. You can also use the elapsed time counter (located beneath the video preview window) to locate specific points in time at which to embed cue points.

7. When the playback head is positioned at a place in the video where you want to embed a cue point, click the (+) button on the left side of the Cue Points tab.

Flash Video Encoder embeds a cue point at the time indicated by the counter beneath the video preview window, and populates the cue point list with a placeholder for the name of the new cue point and the elapsed time at which the cue point is located (this is the time during playback when the event will be triggered), and displays a pop-up menu that lets you select the type of cue point to embed.

A cue point marker is displayed on the slider control at the point where the cue point was embedded. You can use the cue point marker to further adjust the placement of the cue point. For greater precision, you can use the left and right arrow keys to move the cue point marker in millisecond increments. To do this, select the cue point marker, and then use the arrow keys to further adjust its position.

NOTE

Only one cue point can be embedded at a specified time code within the video clip.

8. Specify the type of cue point you want to embed. You can embed either a navigation or event cue point.
  - Event cue points are used to trigger ActionScript methods when the cue point is reached, and let you synchronize the video playback to other events within the Flash presentation.
  - Navigation cue points are used for navigation and seeking, and to trigger ActionScript methods when the cue point is reached. Embedding a navigation cue point inserts a keyframe at that point in the video clip to enable viewers to seek to that place in the video.

NOTE

Adding additional keyframes can lower the overall quality of a video clip. For this reason, navigation cue points should only be used when users will need to seek to a particular place within the video. For more information on keyframes, and their effect on video playback, see [“Keyframes” on page 10](#).

To learn more about the differences between event and navigation cue points, see For more information, see Chapter 22, “FLVPlayback Component (Flash Professional Only),” of the *Components Language Reference*.

**9.** Enter parameters for the selected cue point.

Parameters are a set of key-value pairs that you can add to the cue point. The parameters are passed to the cue point event handler as members of the single parameter object.

To learn more about using cue points, and the parameter values they can use, see:

- Chapter 12, “Working with Video,” in *Using Flash*
- Chapter 22, “FLVPlayback Component” in *Components Language Reference*

**To remove a cue point:**

- 1.** Select the cue point in the cue point list.
- 2.** Click the Delete Cue Point button (-), or press the Delete key.

The cue point is deleted from the cue point list.

## Cropping and trimming video

Flash Video Encoder provides the following editing options that let you crop and trim video clips before encoding them:

**Cropping** lets you alter the dimensions of a video clip. You can eliminate areas of the video to emphasize a particular focal point within the frame such as highlighting a character by removing ancillary imagery or removing unwanted backdrops.

**Trimming** lets you edit the beginning and ending points (the *in* and *out points*) of a video. For example, you can adjust the trim of a video clip to begin play back 30 seconds into the full clip, removing unwanted frames.

- 1.** Select a video in which you want to embed cue points.

To select a video in the encoding list, click the video name in the video encoding queue.

- 2.** Click Settings.

The Flash Video Encoding Settings dialog box appears.

- 3.** Click Advanced Settings.

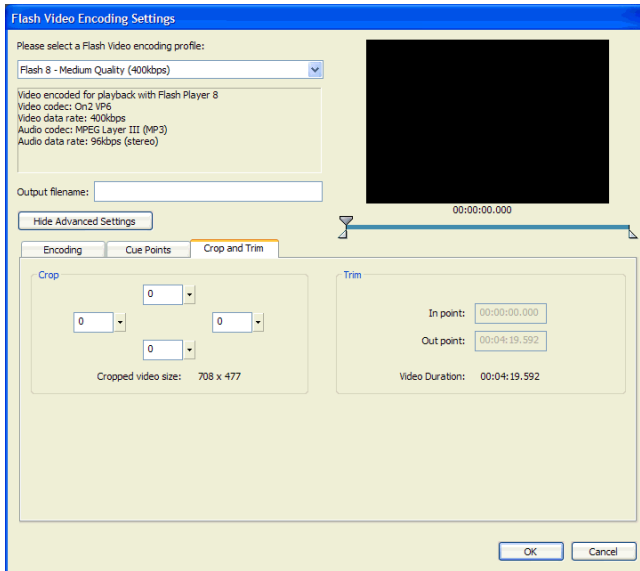
The Advanced Flash Video Encoding options are displayed.



4. If you haven't yet specified encoding setting for the video clip, do so now. To learn more, see ["Encoding video with Flash Video Encoder"](#) on page 14.

5. Click the Crop and Trim tab.

The Crop and Trim dialog box appears.



6. Enter values for the right, left, top, and bottom edges to crop the video, or use the slider controls to visually adjust the dimensions of the video. Guides in the preview window indicate the cropped area.

7. To set the in and out points (the points at which the video begins and ends), drag the in and out point markers below the scrubber bar until you finish adjusting the video clip size. The video preview window lets you visually identify beginning and ending frames where you can trim the video clip. You can also use the elapsed time counter (located in the Trim section of the dialog box) to locate specific points in time where you can trim the video clip.

8. Preview the video by dragging the playback head over the scrubber bar to ensure that it plays appropriately.

9. When you finish cropping and trimming the video, you may select either the Cue Point or the Encoding tab to further modify the video's encoding settings, or click OK to return to the main Flash 8 Video Encoding dialog box.

If you are ready to encode your video clips, or need to add additional source video clips to encode, see [“Encoding video with Flash Video Encoder” on page 14](#).

To learn about the other options available in the Flash Video Encoding Settings dialog box, see the following sections:

- [“Specifying advanced video encoding settings” on page 18](#)
- [“Defining and embedding cue points” on page 21](#)

NOTE

When you encode the video, the original source video clip is not changed. You can always re-encode a video clip and specify new settings if your initial attempt doesn't produce the results you want.

## Setting Flash Video Encoder preferences

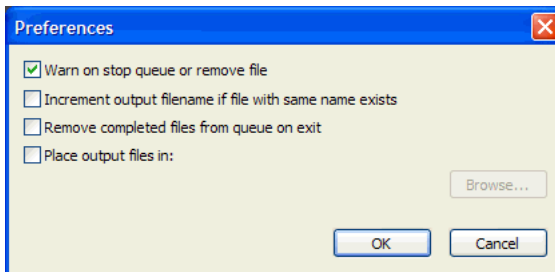
Flash Video Encoder provides the following preference settings that you can specify:

Flash lets you set preferences for general application operations, editing operations, and clipboard operations.

### To set preferences:

1. Select Edit > Preferences (Windows) or Flash > Preferences (Macintosh).

The Preferences dialog box is displayed.



2. Select from the respective options described in the procedures that follow.
  - By default, Flash Video Encoder prompts you with a warning if you attempt to stop encoding a queue, or remove a file during the encoding process. To disable the warning, deselect **Warn on stop queue or remove file**.
  - By default, Flash Video Encoder increments each file you encode with the same name by appending a number to the filename. For example, if you encode a video clip and create the output file video.flv, and then decide to re-encode the same file without deleting video.flv, Flash Video Encoder will name the next file video1.flv. To disable filename incrementing, deselect the **Increment Output Filename If File With Same Name Exists** option.

**CAUTION**

If you choose to disable filename incrementing, Flash Video Encoder writes over any existing files in the destination folder with the same name. To prevent this, name your video clips in such a way that they don't inadvertently overwrite one another.

- To remove files from the encoding queue once they've been encoded, select the **Remove Completed Files From The Queue On Exit** option. This removes any encoded files from the encoding queue when you exit (close) Flash Video Encoder.
- By default, Flash Video Encoder places encoded FLV files in the same folder as the source video clip, prepending a .flv extension to differentiate the newly encoded video clip from its source video. To select a different destination folder in which to place FLV encoded video clips, select the **Place Output Files In** checkbox. The **Browse for a Folder** dialog box will be displayed.

Select an existing folder on your local computer, or create a new folder in which to output encoded video files.

## Viewing the Flash Video Encoder log file

Flash Video Encoder provides a log file that lets you view the status of files that you have encoded. The log file opens automatically if any errors are encountered when encoding a video clip, or if you manually stop the encoding queue.

The log file is a plain text file that contains a record of all files encoded, whether successfully completed or not. The encoding status of each file you encode is appended to the end of the file (placing the newest entry at the end of the file). The log file adds entries until you manually clear them by opening the file in a text editor, selecting all of the entries, deleting them, and saving the empty file using the default filename (log.text).

The log file is stored in the following location:

- Windows: C:\Documents and Settings\*user*\Application Data\Macromedia\Fly 8 Video Encoder\log.txt
- Macintosh: Macintosh HD/Users/*user*/Library/Application Support/Macromedia/Fly 8 Video Encoder/log.txt

**To view the log file:**

- Select File > Show Log.

The log file is displayed using the operating system's default text editing application.

## Troubleshooting video encoding errors

Flash Video Encoder provides an error window that you can use to troubleshoot errors encountered when encoding video clips.

**To view the error messages:**

- Select File > Show Errors.

You can leave the Errors dialog box open when encoding video clips. The Errors dialog box clears all entries when you exit Flash Video Encoder.

# Index

## A

- aspect ratio
  - about 11
  - resizing 20
- audio
  - about 13
  - encoding 13

## B

- bit rate, see *data rate*

## C

- cue points
  - about 13
  - embedding 21
  - FLVPlayback, triggering events 22
  - removing 24

## D

- data rate
  - about 10
  - Maximum Data Rate text box 10
  - specifying 20

## E

- encoding
  - adding files 14
  - troubleshooting 28
  - video settings 14
- error messages, viewing 28

## F

- Flash Video Encoder
  - about 6
  - codecs 7
  - error messages 28
  - log file 27
  - preferences 26
- FLV QuickTime Export plug-in
  - about 6
  - supported applications 6
  - supported editing applications 6
- frame rate, reducing 9

## K

- keyframes
  - about 10
  - default interval 19
  - interval 10
  - specifying 19

## L

- log file
  - directory path 27
  - viewing 27

## N

- NTSC video frame rate 9

## P

- PAL video frame rate 9

# V

## video

- aspect ratio, about 11
- cropping 24
- cue points, about 13
- data rate, about 10
- data rate, specifying 20
- editing controls 24
- encoding settings 14
- encoding with Flash Video Encoder 14
- encoding, adding files 14
- frame rate, about 9
- keyframe interval 10
- keyframes, about 10
- quality setting, specifying 20
- resizing aspect ratio 20
- trimming 24
- troubleshooting 28

## video codecs

- about 7
- interframes 8
- intraframes 8
- On2 VP6 8
- On2 VP6 versus Sorenson Spark 8
- Sorenson Spark 8
- terminology 8

## video editing

- in and out points 25
- trimming end points 24

## video-editing applications

- Adobe After Effects 7
- Apple Final Cut Pro 7
- Apple Quicktime Pro 7
- Avid Xpress DV 7